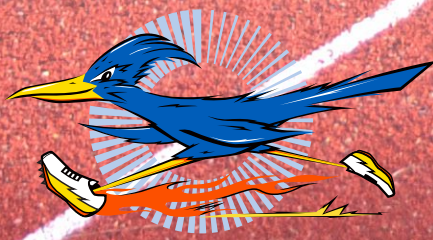


RoadRunner

**Cross Country and Track
Wireless Timing**





The **RoadRunner** wireless timing systems provide a cost-effective solution for your track or cross country meets. RoadRunner utilizes patented technology and 2.4GHz spread spectrum wireless to deliver automated timing performance for a fraction of the cost. Never before has this level of functionality and accuracy been available in an entry-level timing system.

Each **RoadRunner** system is a collection of remotely started wireless stopwatches. Most configurations consist of a starter unit that sends out a start signal to the watches at the beginning of each race. With this start signal, each wireless stopwatch starts simultaneously.

Since the watches all start simultaneously, split and finish times are more accurate.



lane timer



starter



group timer

RoadRunner track:

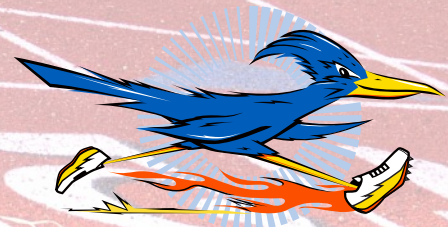
6- or 8-lane configurations are available. Each configuration includes:

- 6 or 8 wireless lane timer stopwatches
- Starter unit
- Wireless group timer stopwatch
- PC interface module
- PC software application
- Repeater unit with tripod and battery pack

Each wireless stopwatch features a large amount of onboard memory to store many races with split and finish times. Events and heats can be specified, so organization and memory look up are simplified. Stopwatches have a large backlit LCD display that is easily readable in bright sunlight. Lane timer stopwatches display detailed information, such as event/heat, lap times, and running time.

Coaches can take advantage of **RoadRunner** technology during practice by using the lane timer stopwatch in standalone mode. This allows you to time practices, record times, and download for review at a later time.

The PC interface module connects via USB to your PC or laptop and communicates wirelessly with the **RoadRunner** system. **RoadRunner** U.S. patent no: 7,821,876 8,085,623 8,111,588



RoadRunner cross country:

- Starter unit
- Wireless group timer stopwatch
- PC interface module
- PC software application
- Optional wireless backup group timer stopwatch
- Optional repeater unit with tripod and battery pack

The **RoadRunner** cross country functionality relies on the group timer to record finish times for participants that are not required to stay in lanes. A backup group timer is recommended to make sure that times are not missed.



The **RoadRunner** PC software application monitors the system in real time and communicates times to meet management systems. The software stays in constant wireless contact, via the PC interface module, with the starter and all timers/stopwatches; allowing all parts of the system to work together as one.

The main screen allows you to monitor the current system state and run time, along with all of the current times from the stopwatches.

The primary purpose of the software is to record the results of the races so that they can be managed by a meet management program, or used in some other way.

RoadRunner software integrates with most meet management programs including: MeetPro, RunScore, Racetab, Hy-Tek and many more.

Timer #	Place	Time
1	1st	16:26.60
1	2nd	16:31.24
1	3rd	16:52.17
1	4th	17:02.46
1	5th	17:03.73
1	6th	17:26.54
1	7th	17:32.37
1	8th	17:41.55
1	9th	17:42.30
1	10th	17:52.77
1	11th	17:55.73
1	12th	17:59.59
1	13th	18:00.08



RoadRunner systems:

Description

Part #

RoadRunner 6-lane wireless track timing system

WTS-RRT06

RoadRunner 8-lane wireless track timing system

WTS-RRT08

RoadRunner cross country wireless timing system

WTS-RRXC1

RoadRunner cross country wireless timing system w/starter unit

WTS-RRXCIS

RoadRunner cross country wireless timing system w/starter and backup timer

WTS-RRXC2S

Simplify your track and cross country meets today with this innovative wireless timing technology. Don't forget to ask about our scoreboard interface options for track.



**Colorado
TIME SYSTEMS**
A **PLAYCORE** Company

www.coloradotime.com | info@coloradotime.com

1551 E 11th St., Loveland, CO 80537
800-279-0111 | +1(970)667-1000 | +1(970)667-5876 (fax)